



Pump specifications:

Type..... PT130 D130
 Design..... Double acting, duplex piston pump
 Max. flow 35 m³/hour (154 US GPM)
 Max. pressure 20 mwc (66 ft.)
 Max. suction lift..... 9.6 mwc (32 ft.)
 Connections..... 4"
 Electric motor..... 3 kW (4 Hp)
 Voltage 230/400V
 Base frame Hot dip galvanized
 Weight (net) 575 kg (1265 lb.)

FEATURES

PT Wellpoint pump

The PT wellpoint pump has been designed for vertical- and horizontal dewatering applications. These positive displacement pumps are fully self-priming and are capable of handling air, water or any mixture of both without requiring a separate priming system.

Furthermore, these pumps are capable of running dry indefinitely without causing damage or excessive wear to any part of the unit.

World-class performance

The PT pump package offers lowest cost of ownership and provides a reliable and durable solution to the challenges facing dewatering companies around the world. The technology has been tried and tested in the field and has revolutionised the vertical- and horizontal dewatering market on a global scale, by offering unmatched performance at minimal costs thereby improving the return on investment (ROI).

Key features PT Pumps

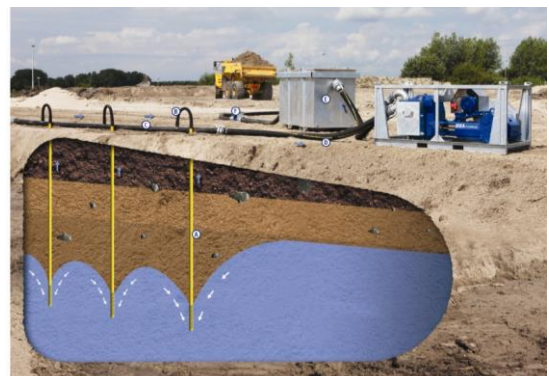
- Self-priming, no additional priming system required
- Excellent suction capabilities on all flows
- High pump efficiency
- Minimal power consumption reducing running costs
- Can run dry indefinitely
- Cheap and easy-to-replace wear parts
- 100% mechanical technology
- Extended unit life time

Complete package designed & built by BBA Pumps

- Complete in-house design & production
- Over 60 years of experience in the market
- Extensive testing facility in-house
- Contemporary & functional design
- Durable & eco-friendly materials

After sales service & product support

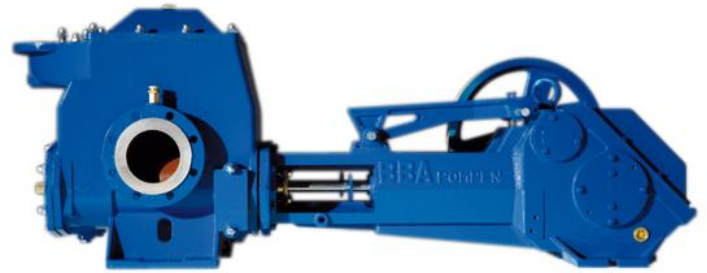
- Single supplier for parts, spares & accessories
- Dedicated customer help-desk (24h service)
- Dedicated service department in-house
- Global parts distribution network
- Optional global on-site servicing
- Extensive training options available (technical & commercial), on-site or in-house



STANDARD TECHNICAL SPECIFICATIONS

BBA double action piston pump

Pump type.....	PT130
Max. flow.....	35 m ³ /hour (154 US GPM)
Max. head.....	20 mwc (66 feet)
Max. suction lift.....	9.6 mwc (32 ft.)
Speed.....	62 strokes/min
Pump casing.....	Cast iron GG20
Pump cover.....	Cast iron GG20
Cylinder liners.....	Stainless steel 1.4301
Piston cups.....	Leather
Piston rods.....	Stainless steel 304
Shaft seal.....	Gland packing
Valve rubbers.....	NBR
Stone catcher.....	Steel hot dip galvanized
Measure equipment.....	Vacuum gauge
Connections.....	Steel hot dip galvanized



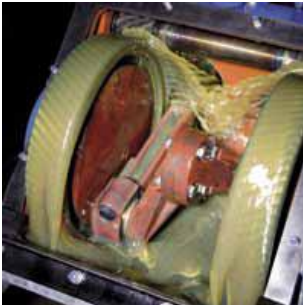
Electric motor

Motor type.....	HMA3
Power.....	3 kW (4 Hp)
Speed.....	1435 RPM
Voltage.....	230/400 V
Frequency.....	50 Hz
Poles.....	4
Mounting.....	B3
Protection.....	IP55
On-off switch.....	Manual
Plug.....	CEE 5P/32A/400V



BBA base frame

Frame.....	Steel hot dip galvanized
Dimensions L x B x H.....	1500 x 700 x 1015 mm
Dimensions L x B x H.....	59 x 27.5 x 40 inch
Lifting point.....	Fitted with single lifting point
Forklift pockets.....	N/A
Motor rain cover.....	Steel hot dip galvanized
Belt guard.....	Steel hot dip galvanized



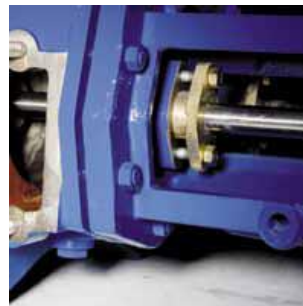
Lubrication and drive
Precisely machined drive gears and an automatic lubrication system provide excellent performance and minimal sound emissions.



Practical valve system
The valve system is fitted with an o-ring seal and a solid bridge section for securing purposes. This allows for quick and easy disassembly, even after prolonged use.



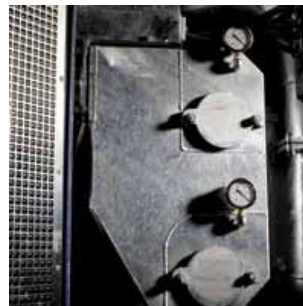
Easy access points
Allowing access to the cylinders, stuffing boxes and other critical areas for easy cleaning and maintenance.



Hard-wearing piston rods
The stainless steel piston rods have been carefully machined to provide an increased service life and minimal maintenance.



Exchangeable liners
The stainless steel cylinder liners can be rotated for extended service life. Fitted with a quick release system, rotating and exchanging the cylinders is simple even when servicing the pump in the field.



Standard stone catcher
All PT pumps feature a stone catcher protecting the pump internals from any suspended solids. The stone catcher has easy-access cleaning covers and comes with dual vacuum gauges to monitor pump performance.

Pictures used are for illustration purposes only.